

HAMAMATSU

PRELIMINARY DATA
OCT. 1998

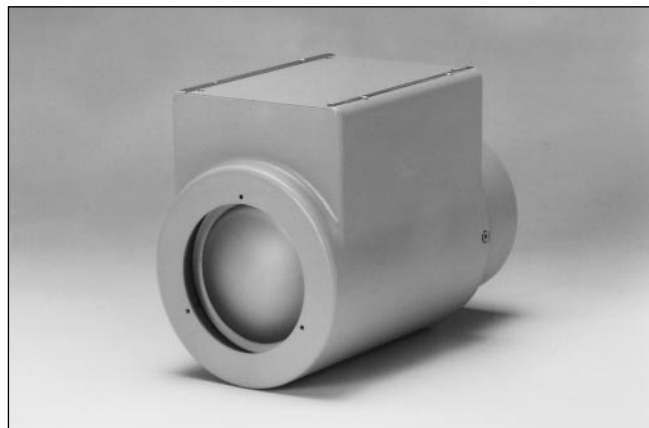
4 INCH X-RAY IMAGE INTENSIFIER CAMERA UNIT C7336, -10

We have developed 4 inch X-ray image intensifier (II) (V7227P) which have high-resolution and high-contrast characteristics. In order to make good use of its high quality image, V7227P is coupled to a high-sensitivity CCD camera.

As C7336 is compact size, you can make the distance between X-ray source and X-ray image intensifier long.

However, in the case of the shorter distance, it is designed to get the low distortion image.

So you can configure the more compact size X-ray inspection system with high magnification and high quality image especially used with Hamamatsu microfocus X-ray source series.



CHARACTERISTICS

1. General

① 4 Inch X-ray Image Intensifier V7227P (DC power supply included)

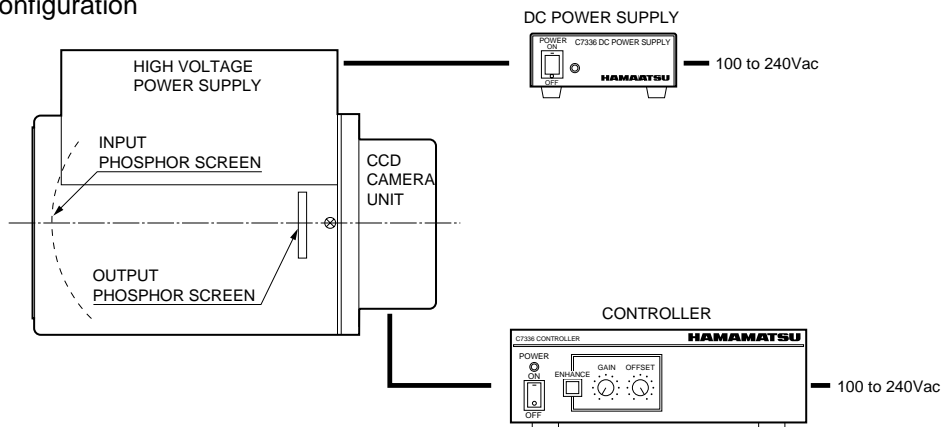
| Parameter | Typ. | Unit |
|-----------------------|----------------------|------|
| Input Window Material | Al(0.5mmt) | — |
| Detective Phosphor | P-20 similar | — |
| Screen Material | Csl | — |
| Input Voltage | 100 to 240 (50/60Hz) | Vac |
| Power Consumption | 10 | W |
| Weight | 7 | Kg |

② CCD Camera Unit, Controller

| Parameter | C7336 | C7336-10 | Unit |
|------------------------|----------------------|------------------|---------|
| Scanning Method | NTSC B/W | CCIR | — |
| Effective Area | 72 × 54 | 70 × 52 | mm |
| Total Pixel | 410,000 | 480,000 | pixel |
| Resolution | H: 650 V: 480 | H: 650 V: 580 | TV line |
| CCD Chip | 2/3 inch FIT | | — |
| Aspect Ratio | 4: 3 | | — |
| S/N Ratio [Ⓐ] | 61 | | dB |
| Signal Output | 1.0Vp-p/75Ω | | — |
| Input Voltage | 100 to 240 (50/60Hz) | | Vac |
| Power Consumption | 25 | | W |
| Weight | 3 | | Kg |

NOTE: Ⓐ Auto gain controll (AGC): off

Figure 1: System Configuration

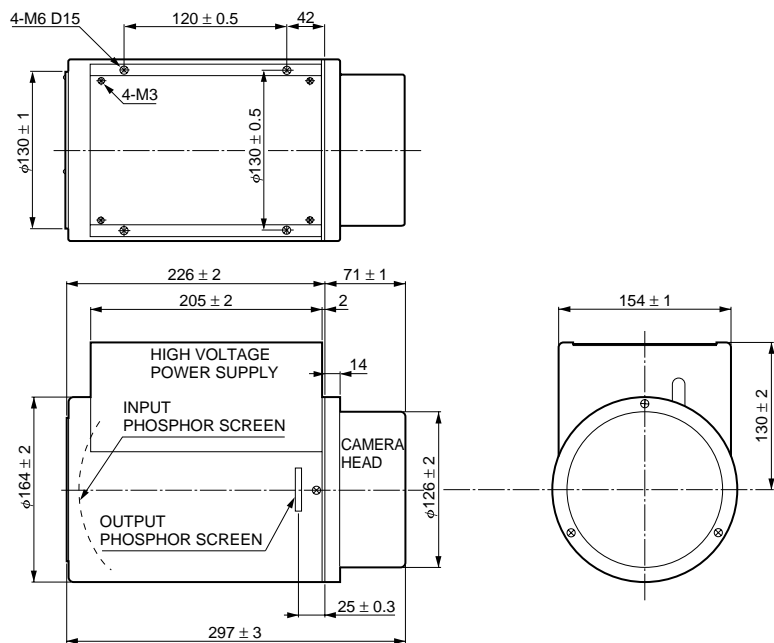


TIH C0050EC

4 INCH X-RAY IMAGE INTENSIFIER CAMERA UNIT C7336, -10

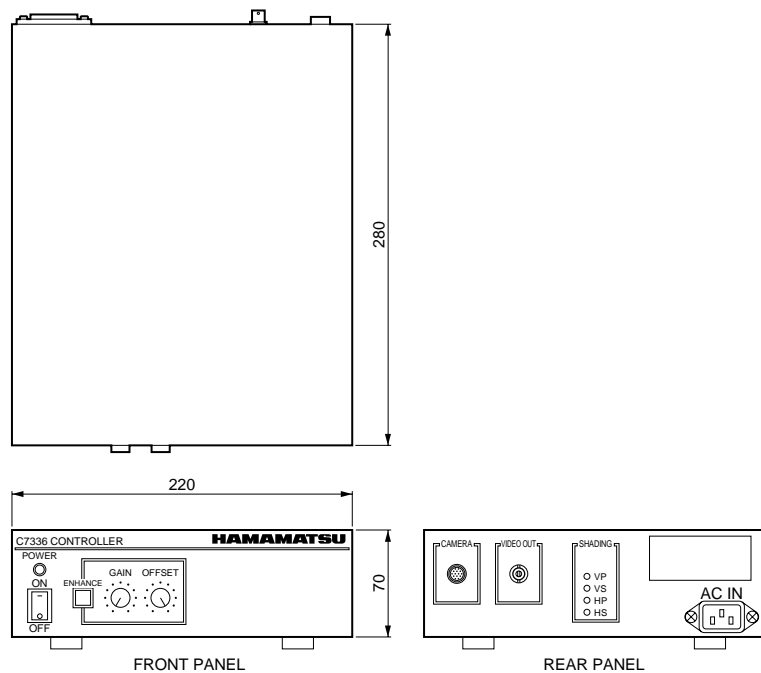
Figure 2: Dimensional Outline (Unit: mm)

X-ray Image Intensifier Camera Head



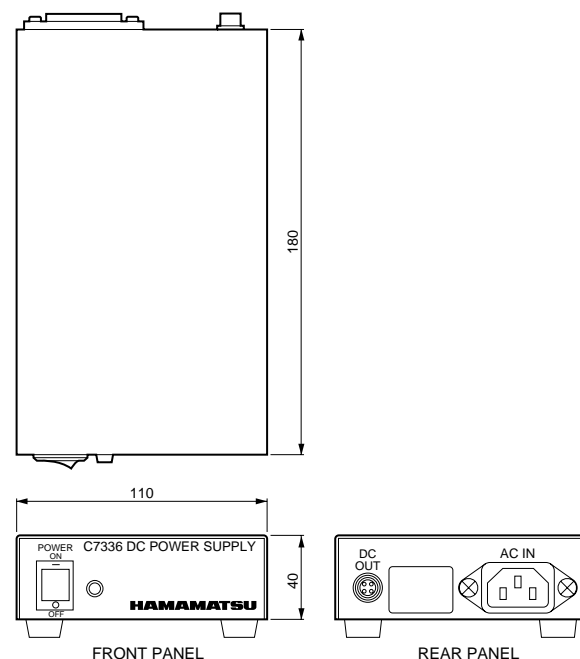
TII A0036EB

Controller



TII A0037EC

DC Power Supply



TII A0038EC

*C7336-10

CE making : EMC/EN 55011; 1991/EN 50082-2; 1995 (Group1 ISM Equipment, Class A)
Safety/EN 61010-01: 1993+A2: 1995 (IEC 61010-01: 1990+A1: 1992+A2: 1995)

HAMAMATSU

HAMAMATSU PHOTONICS K.K., Electron Tube Center

314-5, Shimokanzo, Toyooka-village, Iwata-gun, Shizuoka-ken, 438-0193, Japan, Telephone: (81)539/62-5248, Fax: (81)539/62-2205

U.S.A.: Hamamatsu Corporation: 360 Foothill Road, P. O. Box 6910, Bridgewater. N.J. 08807-0910, U.S.A., Telephone: (1)908-231-0960, Fax: (1)908-231-1218

Germany: Hamamatsu Photonics Deutschland GmbH: Arzbergerstr. 10, D-82211 Herrsching am Ammersee, Germany, Telephone: (49)8152-375-0, Fax: (49)8152-2658

France: Hamamatsu Photonics France S.A.R.L.: 8, Rue du Saule Trapu, Parc du Moulin de Massy, 91882 Massy Cedex, France, Telephone: (33)1 69 53 71 00, Fax: (33)1 69 53 71 10

United Kingdom: Hamamatsu Photonics UK Limited: Lough Point, 2 Gladbeck Way, Windmill Hill, Enfield, Middlesex EN2 7JA, United Kingdom, Telephone: (44)181-367-3560, Fax: (44)181-367-6384

North Europe: Hamamatsu Photonics Norden AB: Färögatan 7, S-164-40 Kista Sweden, Telephone: (46)8-703-29-50, Fax: (46)8-750-58-95

Italy: Hamamatsu Photonics Italia: S.R.L.: Strada della Moia, 1/E, 20020 Arese, (Milano), Italy, Telephone: (39)02-935 81 733, Fax: (39)02-935 81 741

TII 1041E02
OCT. 1998 SI
Printed in Japan (300)