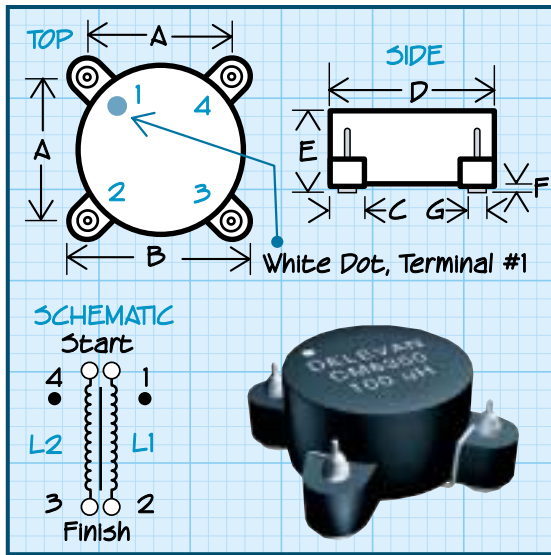


# Series CM6350 Surface Mount Common Mode Choke



**Mechanical Configuration** A flat top surface mount case with excellent coplanarity of terminals.

### Physical Parameters

	Inches	Millimeters
A	0.285 ± 0.010	7.24 ± 0.25
B	0.360 ± 0.010	9.14 ± 0.25
C	0.060 ± 0.010	1.52 ± 0.25
D	0.350 ± 0.010	8.90 ± 0.25
E	0.200 ± 0.010	5.08 ± 0.25
F	0.025 ± 0.010	0.64 ± 0.25
G	0.040 (Ref. only)	1.02 (Ref. only)

### Electrical Configuration

- 1) Inductance and DCR in table is for either L1 or L2.
- 2) Leakage Inductance tested at L1 with L2 shorted or at L2 with L1 shorted.
- 3) Windings balanced within 2%
- 4) Inductance tested @ 10 kHz

**Operating Temperature Range** -55°C to +125°C

**Electrical Characteristics** Measured at +25°C

**Rated RMS Current** Based upon 40°C temperature rise from 25°C ambient

**Maximum Power Dissipation at 25°C** 0.400 Watts

**Inductance Tolerance** Units are supplied to the tolerance indicated in the tables @ 10 KHz

**Marking** Parts are printed with Delevan, Inductance Value, and white dot at terminal #1.

**Packaging** Tape & reel (24mm):

13" reel, 600 pieces max.; 7" reel not available

PART NUMBER

L1 or L2 INDUCTANCE  
±25% (µH)

DCR (Ohms) Max.

RATED RMS CURRENT  
(Amps) Max

LEAKAGE INDUCTANCE  
(µH) Typical

### FERRITE CORE

CM6350-333	33	0.007	5.50	0.20
CM6350-473	47	0.008	5.00	0.30
CM6350-683	68	0.010	4.20	0.42
CM6350-104	100	0.014	3.30	0.55
CM6350-154	150	0.020	2.70	0.85
CM6350-224	220	0.027	2.20	1.20
CM6350-334	330	0.040	1.80	1.80
CM6350-474	470	0.060	1.50	1.60
CM6350-684	680	0.090	1.20	2.10
CM6350-105	1000	0.130	0.90	2.80
CM6350-155	1500	0.190	0.75	4.20
CM6350-225	2200	0.300	0.60	6.00
CM6350-335	3300	0.550	0.40	9.00
CM6350-475	4700	1.050	0.25	13.00

### LAND PATTERN DIMENSIONS

