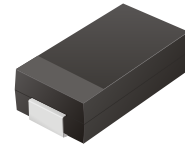


## CFRB201 Thru CFRB207

**Reverse Voltage: 50 - 1000 Volts**  
**Forward Current: 2.0 Amp**

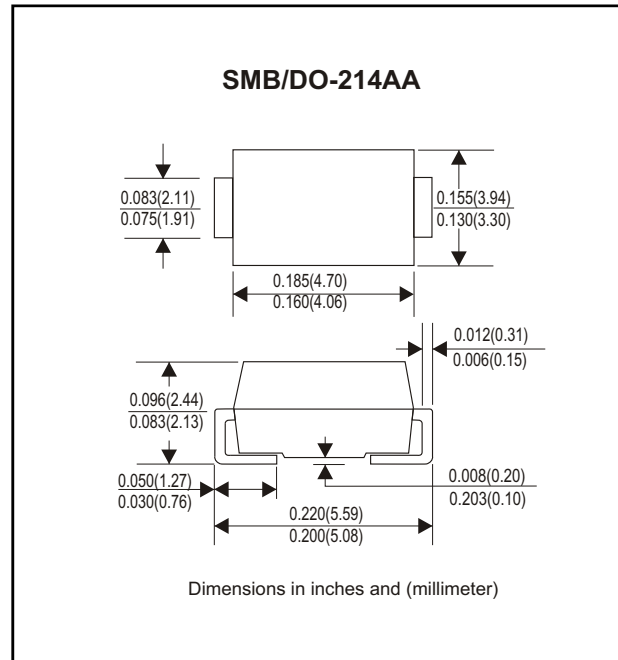


### Features

- Ideal for surface mount applications
- Easy pick and place
- Plastic package has Underwriters Lab. flammability classification 94V-0
- Fast recovery time: 150 - 500 nS
- Low leakage current

### Mechanical data

- Case: JEDEC DO-214AA molded plastic
- Terminals: solderable per MIL-STD-750, method 2026
- Polarity: Color band denotes cathode end
- Mounting position: Any
- Approx. Weight: 0.093 gram



### Maximum Ratings and Electrical Characteristics

Parameter	Symbol	CFRB 201	CFRB 202	CFRB 203	CFRB 204	CFRB 205	CFRB 206	CFRB 207	Unit
Max. Repetitive Peak Reverse Voltage	V <sub>RRM</sub>	50	100	200	400	600	800	1000	V
Max. DC Blocking Voltage	V <sub>DC</sub>	50	100	200	400	600	800	1000	V
Max. RMS Voltage	V <sub>RMS</sub>	35	70	140	280	420	560	700	V
Peak Surge Forward Current 8.3ms single halfsine-wave superimposed on rate load ( JEDEC method)	I <sub>FSM</sub>	60							A
Max. Average Forward Current	I <sub>o</sub>	2.0							A
Max. Instantaneous Forward Current at 2.0 A	V <sub>F</sub>	1.3							V
Reverse recovery time	T <sub>rr</sub>	100			250		500		nS
Max. DC Reverse Current at Rated DC Blocking Voltage Ta=25°C Ta=100°C	I <sub>R</sub>					5.0 50		uA	
Max. Thermal Resistance (Note 1)	R <sub>θJL</sub>	20							°C/W
Operating Junction Temperature	T <sub>j</sub>	-55 to +150							°C
Storage Temperature	T <sub>STG</sub>	-55 to +150							°C

Note 1: Thermal resistance from junction to lead 8.0x8.0mm square (0.13mm thick) land area.

## Rating and Characteristic Curves (CFRB201 Thru CFRB207)

Fig. 1 - Reverse Characteristics

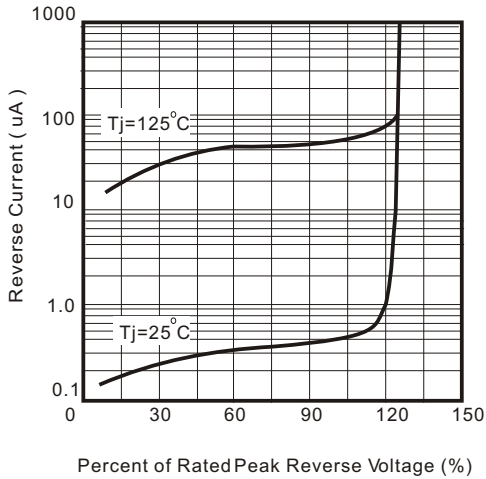


Fig.2 - Forward Characteristics

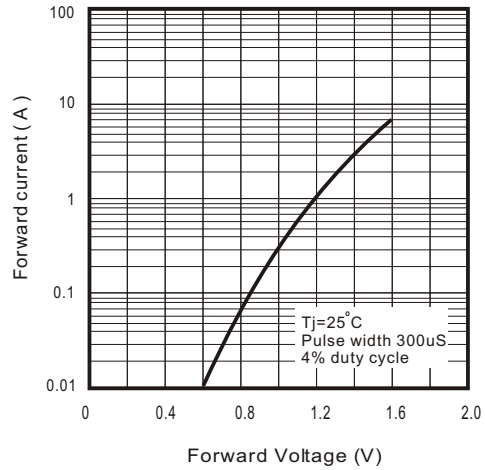


Fig. 3 - Junction Capacitance

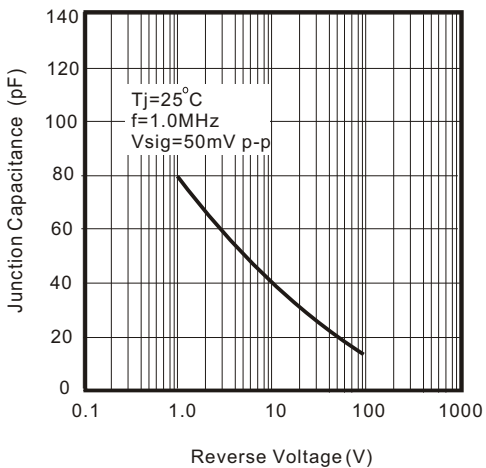


Fig. 5 - Non Repetitive Forward Surge Current

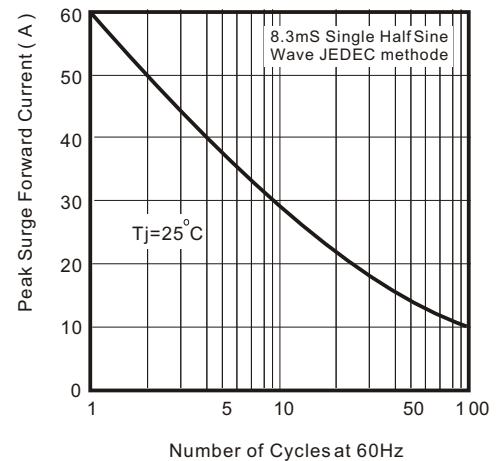
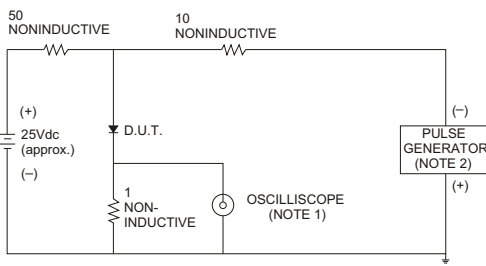


Fig. 5 - Test Circuit Diagram and Reverse Recovery Time Characteristics



NOTES: 1. Rise Time= 7ns max., Input Impedance= 1 megohm, 22pF.  
2. Rise Time= 10ns max., Source Impedance= 50 ohms.

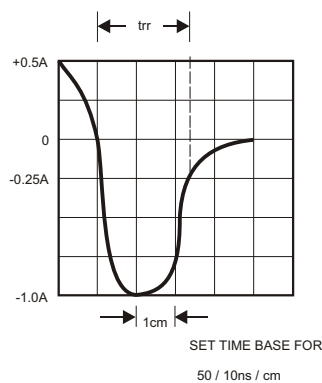


Fig. 6 - Current Derating Curve

