

## 30A, 400V - 600V Ultrafast Dual Diodes

RURH3040CC and RURH3060CC are ultrafast dual diodes ( $t_{rr} < 55\text{ns}$ ) with soft recovery characteristics. They have a low forward voltage drop and are of planar, silicon nitride passivated, ion-implanted, epitaxial construction.

These devices are intended for use as energy steering/clamping diodes and rectifiers in a variety of switching power supplies and other power switching applications. Their low stored charge and ultrafast recovery with soft recovery characteristics minimize ringing and electrical noise in many power switching circuits, thus reducing power loss in the switching transistor.

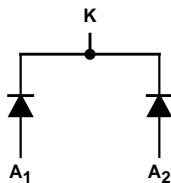
Formerly developmental type TA09903.

### Ordering Information

PART NUMBER	PACKAGE	BRAND
RURH3040CC	TO-218AC	RURH3040C
RURH3060CC	TO-218AC	RURH3060C

NOTE: When ordering, use the entire part number.

### Symbol



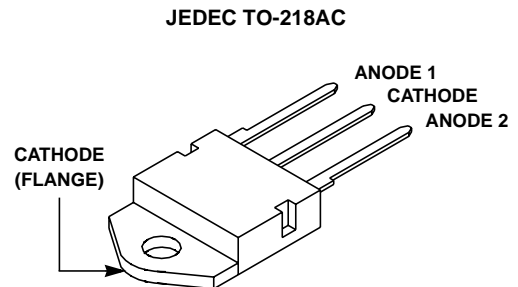
### Features

- Ultrafast with Soft Recovery ..... <math>55\text{ns}</math>
- Operating Temperature .....  $175^{\circ}\text{C}$
- Reverse Voltage Up to .....  $600\text{V}$
- Avalanche Energy Rated
- Planar Construction

### Applications

- Switching Power Supply
- Power Switching Circuits
- General Purpose

### Packaging



### Absolute Maximum Ratings (Per Leg) $T_C = 25^{\circ}\text{C}$ , Unless Otherwise Specified

	RURH3040CC	RURH3060CC	UNITS
Peak Repetitive Reverse Voltage.....	$V_{RRM}$ 400	600	V
Working Peak Reverse Voltage.....	$V_{RWM}$ 400	600	V
DC Blocking Voltage.....	$V_R$ 400	600	V
Average Rectified Forward Current..... ( $T_C = 130^{\circ}\text{C}$ )	$I_{F(AV)}$ 30	30	A
Repetitive Peak Surge Current..... (Square Wave 20kHz)	$I_{FRM}$ 70	70	A
Nonrepetitive Peak Surge Current..... (Halfwave 1 Phase 60Hz)	$I_{FSM}$ 325	325	A
Maximum Power Dissipation.....	$P_D$ 125	125	W
Avalanche Energy (See Figures 7 and 8).....	$E_{VAL}$ 20	20	mJ
Operating and Storage Temperature.....	$T_{STG}, T_J$ -55 to 175	-55 to 175	$^{\circ}\text{C}$

# RURH3040CC, RURH3060CC

## Electrical Specifications (Per Leg) $T_C = 25^\circ\text{C}$ , Unless Otherwise Specified

SYMBOL	TEST CONDITION	MIN	TYP	MAX	MIN	TYP	MAX	UNITS
$V_F$	$I_F = 30\text{A}$	-	-	1.5	-	-	1.5	V
	$I_F = 30\text{A}, T_C = 150^\circ\text{C}$	-	-	1.3	-	-	1.3	V
$I_R$	$V_R = 400\text{V}$	-	-	250	-	-	-	$\mu\text{A}$
	$V_R = 600\text{V}$	-	-	-	-	-	250	$\mu\text{A}$
	$V_R = 400\text{V}, T_C = 150^\circ\text{C}$	-	-	1	-	-	-	$\text{mA}$
	$V_R = 600\text{V}, T_C = 150^\circ\text{C}$	-	-	-	-	-	1	$\text{mA}$
$t_{rr}$	$I_F = 1\text{A}, dI_F/dt = 100\text{A}/\mu\text{s}$	-	-	55	-	-	55	ns
	$I_F = 30\text{A}, dI_F/dt = 100\text{A}/\mu\text{s}$	-	-	60	-	-	60	ns
$t_a$	$I_F = 30\text{A}, dI_F/dt = 100\text{A}/\mu\text{s}$	-	30	-	-	30	-	ns
$t_b$	$I_F = 30\text{A}, dI_F/dt = 100\text{A}/\mu\text{s}$	-	20	-	-	20	-	ns
$R_{\theta JC}$		-	-	1.2	-	-	1.2	$^\circ\text{C}/\text{W}$

### DEFINITIONS

$V_F$  = Instantaneous forward voltage (pw = 300 $\mu\text{s}$ , D = 2%).

$I_R$  = Instantaneous reverse current.

$t_{rr}$  = Reverse recovery time at  $dI_F/dt = 100\text{A}/\mu\text{s}$  (See Figure 6), summation of  $t_a + t_b$ .

$t_a$  = Time to reach peak reverse current at  $dI_F/dt = 100\text{A}/\mu\text{s}$  (See Figure 6).

$t_b$  = Time from peak  $I_{RM}$  to projected zero crossing of  $I_{RM}$  based on a straight line from peak  $I_{RM}$  through 25% of  $I_{RM}$  (See Figure 6).

$R_{\theta JC}$  = Thermal resistance junction to case.

pw = Pulse width.

D = Duty cycle.

## Typical Performance Curves

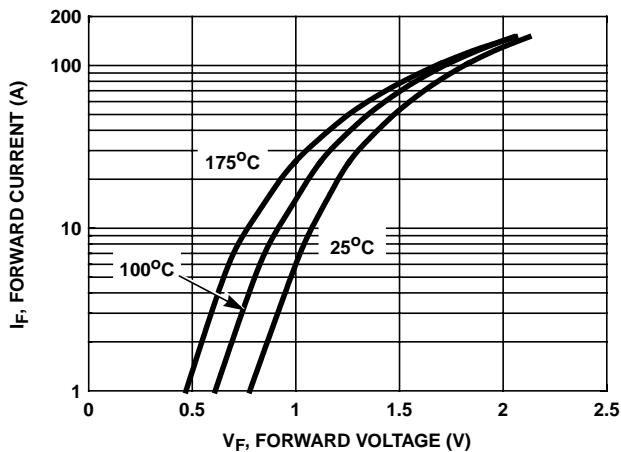


FIGURE 1. FORWARD CURRENT vs FORWARD VOLTAGE

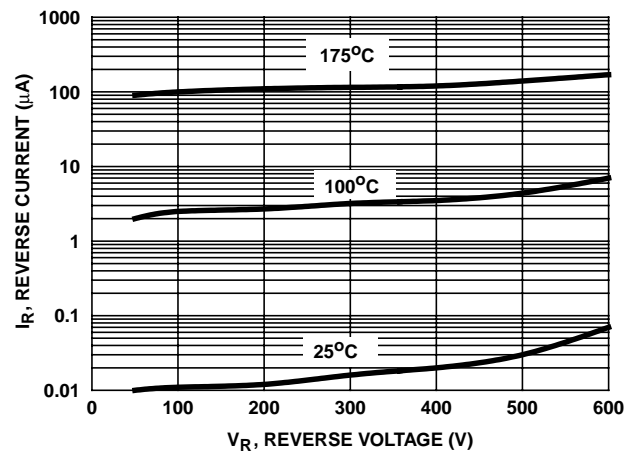


FIGURE 2. REVERSE CURRENT vs REVERSE VOLTAGE

Typical Performance Curves (Continued)

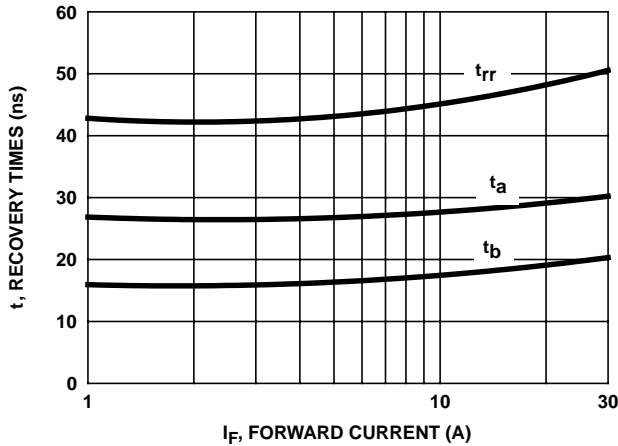


FIGURE 3.  $t_{rr}$ ,  $t_a$  AND  $t_b$  CURVES vs FORWARD CURRENT

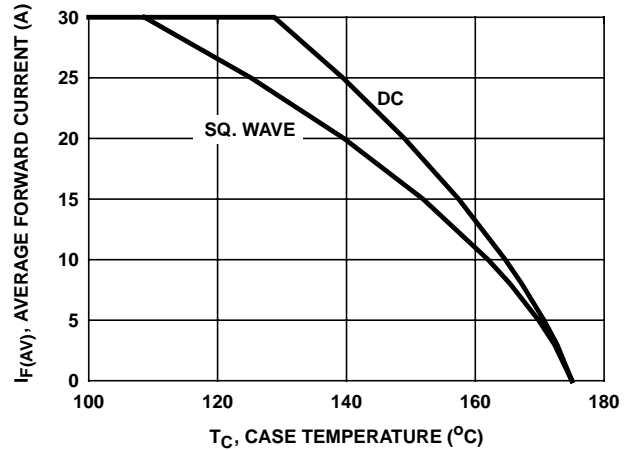


FIGURE 4. CURRENT DERATING CURVE

Test Circuits and Waveforms

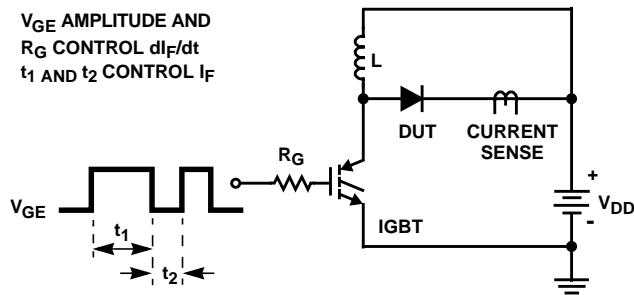


FIGURE 5.  $t_{rr}$  TEST CIRCUIT

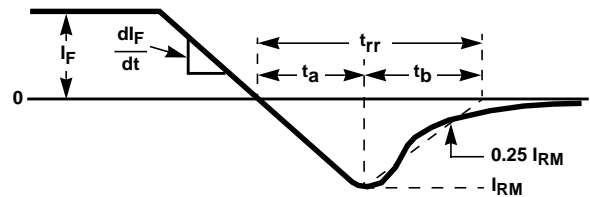


FIGURE 6.  $t_{rr}$  WAVEFORMS AND DEFINITIONS

$I = 1A$   
 $L = 40mH$   
 $R < 0.1\Omega$   
 $E_{AVL} = 1/2LI^2 [V_{R(AVL)}/(V_{R(AVL)} - V_{DD})]$   
 $Q_1 = IGBT (BV_{CES} > DUT V_{R(AVL)})$

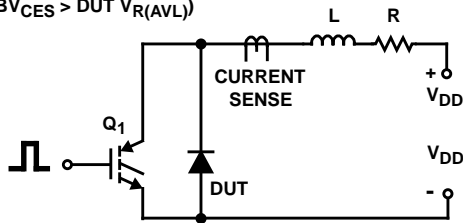


FIGURE 7. AVALANCHE ENERGY TEST CIRCUIT

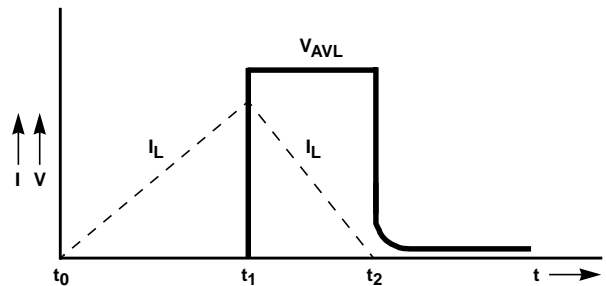


FIGURE 8. AVALANCHE CURRENT AND VOLTAGE WAVEFORMS

All Intersil semiconductor products are manufactured, assembled and tested under **ISO9000** quality systems certification.

Intersil semiconductor products are sold by description only. Intersil Corporation reserves the right to make changes in circuit design and/or specifications at any time without notice. Accordingly, the reader is cautioned to verify that data sheets are current before placing orders. Information furnished by Intersil is believed to be accurate and reliable. However, no responsibility is assumed by Intersil or its subsidiaries for its use; nor for any infringements of patents or other rights of third parties which may result from its use. No license is granted by implication or otherwise under any patent or patent rights of Intersil or its subsidiaries.

For information regarding Intersil Corporation and its products, see web site [www.intersil.com](http://www.intersil.com)