

# SP3T DIODE SWITCH

0.5–18.0 GHz

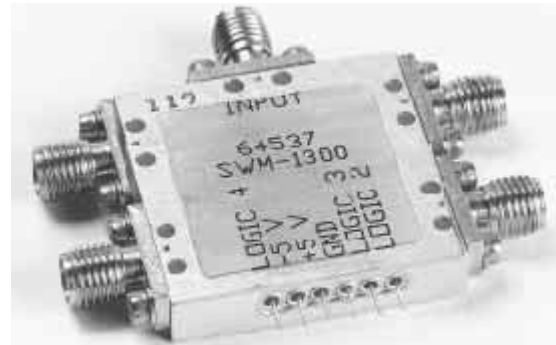
## GENERAL INFORMATION

The Model SWM-1300 SP3T PIN Diode switch operates over the full frequency range 0.5–18.0 GHz in a single unit. KDI/Triangle has integrated microstrip soft substrate with thick film hybrid drivers, which are designed and fabricated "in-house".

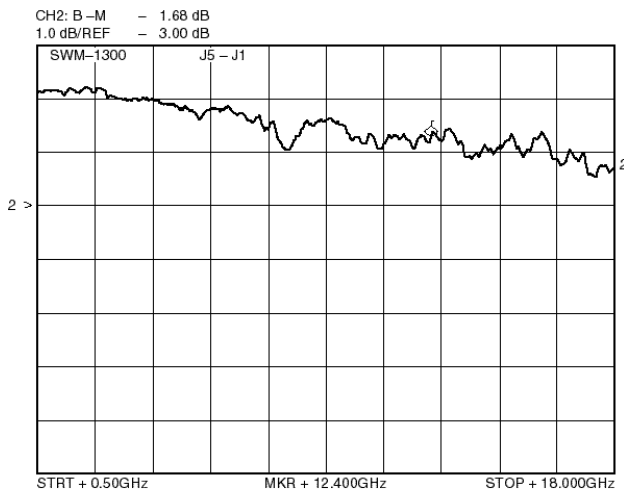
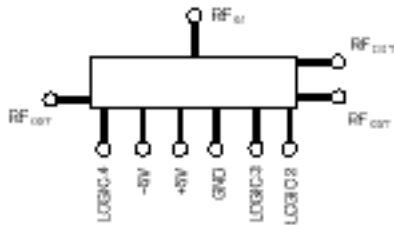
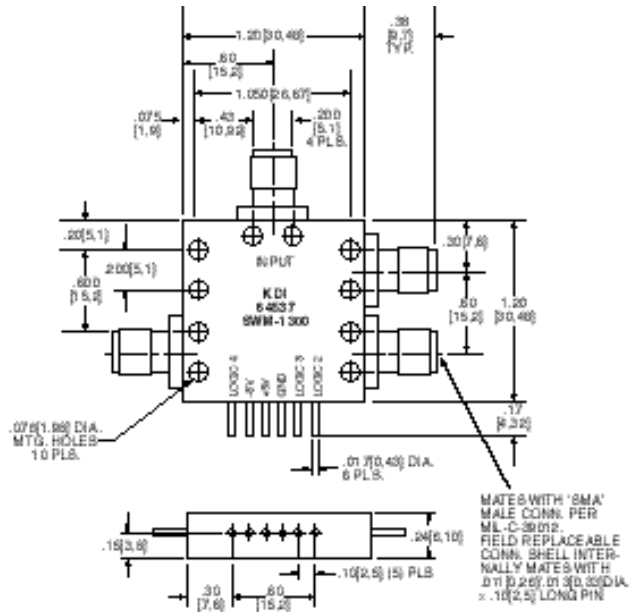
The housing is epoxy sealed to meet the gross leak requirements of MIL-STD-883. SMA connectors are removable.

## GENERAL SPECIFICATIONS

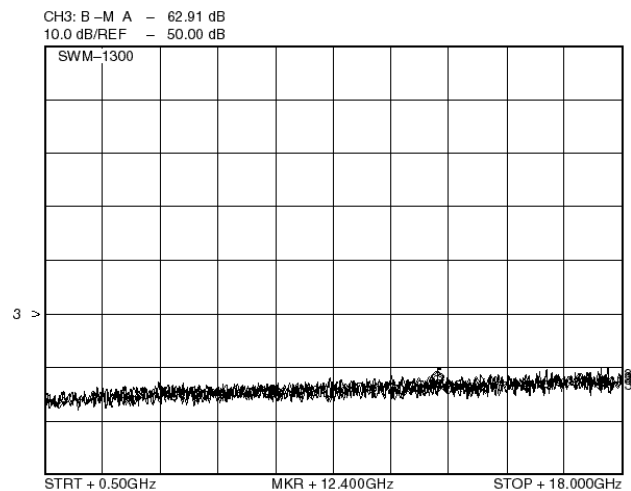
<b>Model:</b>	<b>SWM-1300</b>	
<b>Frequency Range:</b>	0.5–18 GHz	
<b>DC Requirements:</b>	±5V DC at ±125 mA	
<b>Logic:</b>	TTL Compatible, Logic "0" enables thru path	
<b>Temperature:</b>	–55° to 85°C, operating –65° to +125°C, storage	
<b>Switching Speed:</b>	135 nsec. maximum 50%T <sup>2</sup> L to 90%/10% RF Rise/Fall time= 50 nsec. Maximum	
<b>Rise/Fall Time:</b>	50 nsec. maximum	
<b>VSWR:</b>	2:1 maximum (on only)	
<b>RF Power:</b>	20 dBm maximum	
<b>SMA Connectors:</b>	Removable	
Frequency (GHz)	Isolation (dB min.)	Insertion Loss* (dB max.)
0.5-18	60	3.0



**New!** Absorptive Model SWM-1300A available, insertion loss is 3.7dB maximum and the VSWR is 2.0:1 maximum under all conditions, "on/off"



INSERTION LOSS



ISOLATION

KEY: Inches[Millimeters] .XX ±.03 .XXX ±.010 [.X ±0.8 .XX ±0.25]