

# Plug-In RF Transformer

50Ω 0.3 to 300 MHz

## T5-1T-X65+ T5-1T-X65



CASE STYLE: X65  
PRICE: \$4.95 ea. QTY (1-9)

**+ RoHS compliant in accordance with EU Directive (2002/95/EC)**

*The +Suffix identifies RoHS Compliance. See our web site for RoHS Compliance methodologies and qualifications.*

### Maximum Ratings

Operating Temperature	-20°C to 85°C
Storage Temperature	55°C to 100°C
RF Power	0.25W
DC Current	30mA

### Pin Connections

PRIMARY DOT	4
PRIMARY	6
SECONDARY DOT	3
SECONDARY	1
SECONDARY CT	2
NOT USED	5

### Features

- wideband, 0.3 to 300 MHz
- good return loss
- also available with flat-pack (W38) & surface mount gull-wing (KK81) leads

### Applications

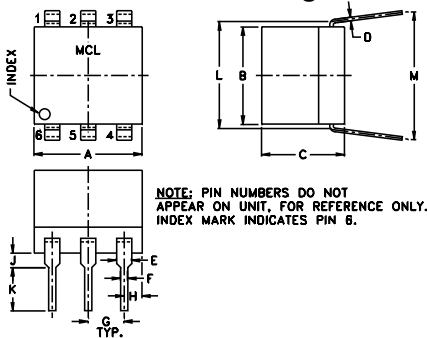
- impedance matching
- push-pull amplifiers

### Transformer Electrical Specifications

Ω RATIO	FREQUENCY (MHz)	INSERTION LOSS*		
		3 dB MHz	2 dB MHz	1 dB MHz
5	0.3-300	0.3-300	0.6-200	5-100

\*Insertion Loss is referenced to mid-band loss, 0.7 dB typ.

### Outline Drawing



### Outline Dimensions (inch/mm)

A	B	C	D	E	F	G
.30	.27	.23	.010	.042	.020	.100
7.62	6.86	5.84	0.25	1.07	0.51	2.54
H	J	K	L	M	wt	
.05	.04	.11	.300	.35	grams	
1.27	1.02	2.79	7.62	8.89	0.50	

### Typical Performance Data

FREQUENCY (MHz)	INSERTION LOSS (dB)	INPUT R. LOSS (dB)
0.30	1.91	6.84
0.70	1.21	12.33
3.00	0.79	16.14
28.00	0.76	16.70
73.00	0.87	17.90
120.00	0.96	18.95
170.00	1.05	19.50
220.00	1.15	18.75
270.00	1.28	16.62
300.00	1.33	15.08

### Config. A

