

#### Absolute maximum ratings

( $T_a=25^\circ\text{C}$ )

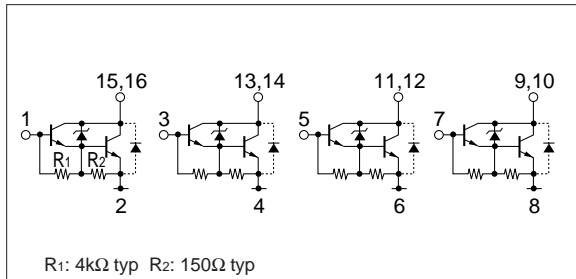
Symbol	Ratings	Unit
$V_{CB0}$	100±15	V
$V_{CEO}$	100±15	V
$V_{EBO}$	6	V
$I_c$	1.5	A
$I_{CP}$	2.5 (PW≤1ms, $D_u$ ≤10%)	A
$I_B$	0.1	A
$P_T$	3 ( $T_a=25^\circ\text{C}$ )	W
$T_j$	150	°C
$T_{stg}$	-40 to +150	°C
$\theta_{j-a}$	41.6	°C/W

#### Electrical characteristics

( $T_a=25^\circ\text{C}$ )

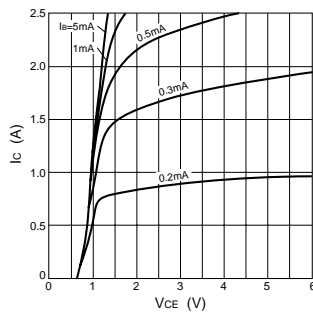
Symbol	Specification			Unit	Conditions
	min	typ	max		
$I_{CB0}$			10	$\mu\text{A}$	$V_{CB}=85\text{V}$
$I_{EBO}$	1		3	mA	$V_{EB}=6\text{V}$
$V_{CEO}$	85	100	115	V	$I_c=10\text{mA}$
$h_{FE}$	2000	5000	12000		$V_{CE}=4\text{V}$ , $I_c=1\text{A}$
$V_{CE(sat)}$		1.0	1.3	V	$I_c=1\text{A}$ , $I_B=2\text{mA}$
$V_{BE(sat)}$		1.7	2.2	V	
$V_{FEC}$		1.2	1.8	V	$I_{FEC}=1\text{A}$
$t_{on}$		0.6		$\mu\text{s}$	$V_{CC} \approx 30\text{V}$ ,
$t_{stg}$		3.0		$\mu\text{s}$	$I_c=1\text{A}$ ,
$t_f$		1.0		$\mu\text{s}$	$I_{B1}=-I_{B2}=2\text{mA}$
$f_T$		30		MHz	$V_{CE}=12\text{V}$ , $I_E=-0.1\text{A}$
$C_{ob}$		20		pF	$V_{CB}=10\text{V}$ , $f=1\text{MHz}$

#### Equivalent circuit diagram

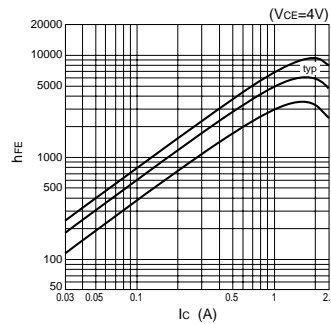


#### Characteristic curves

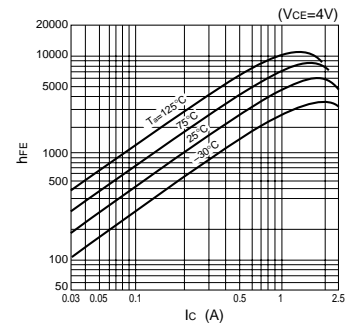
$I_c$ - $V_{CE}$  Characteristics (Typical)



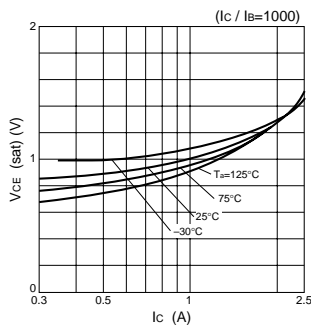
$h_{FE}$ - $I_c$  Characteristics (Typical)



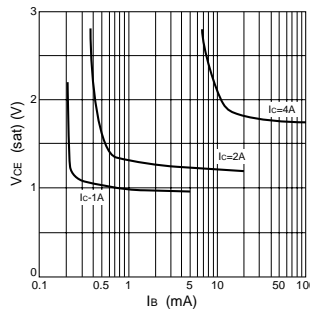
$h_{FE}$ - $I_c$  Temperature Characteristics (Typical)



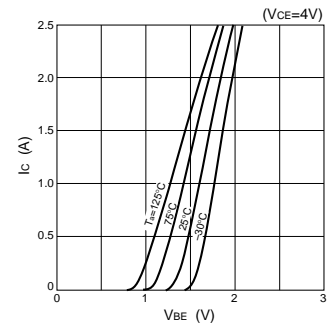
$V_{CE(sat)}$ - $I_c$  Temperature Characteristics (Typical)



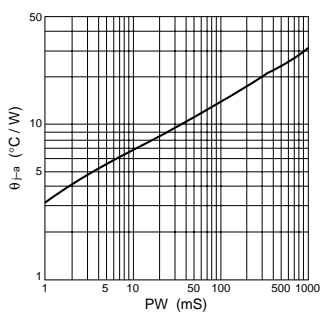
$V_{CE(sat)}$ - $I_B$  Characteristics (Typical)



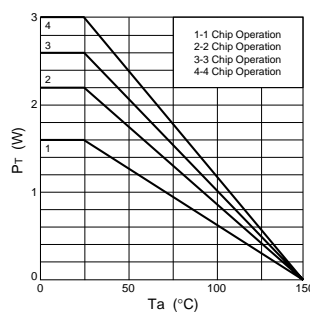
$I_c$ - $V_{BE}$  Temperature Characteristics (Typical)



$\theta_{j-a}$ -PW Characteristics



$P_T$ - $T_a$  Characteristics



Safe Operating Area (SOA)

