

## Tape and Reel Standards

Package	Available Packaging			
	10'' tape & reel	13'' tape & reel	Ammo Pack #1	Ammo Pack #2
	Quantity / Reel	Quantity / Reel	Quantity / Box	Quantity / Box
SOD57	5.000		5.000	
SOD64	2.500		2.500	
DO204AP(G1)		4.500		3.000
G3		1.600		1.000
G4		2.000		2.000

### Taping Specifications SOD57 and SOD64 Package

Description	Symbol	Specification (mm)
Component Pitch	A	5.0 ± 0.5
Inside Tape Spacing	B	52 + 2 mm - 1 mm
Lead to Lead Eccentricity	$ D_1 - D_2 $	1.4 max
Lead Extension	K	0
Lead Bending	M	1.2 max
Cumulative Pitch	P	2.0 per 10 pitch
Exposed Adhesive	S	0.8 max
Tape Width	T	6.0 ± 0.4
Tape Leader	Beginning and end of reel or ammo pack.	
Empty Spaces	Consecutive missing components not allowed	
Polarity Marking	All polarized components shall be oriented in the same direction. The cathode tape shall be colored, and anode tape shall be white or light beige.	

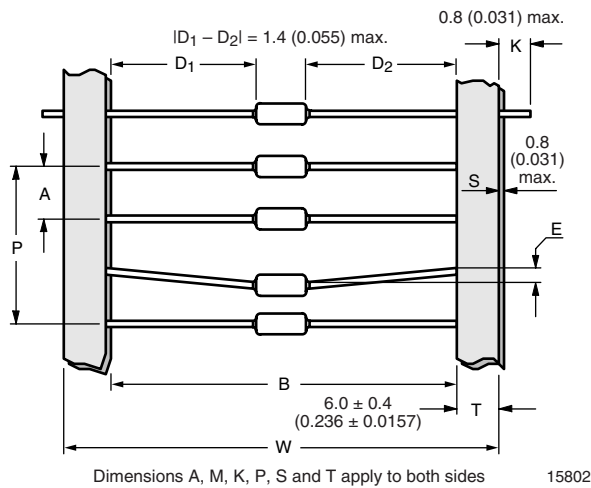
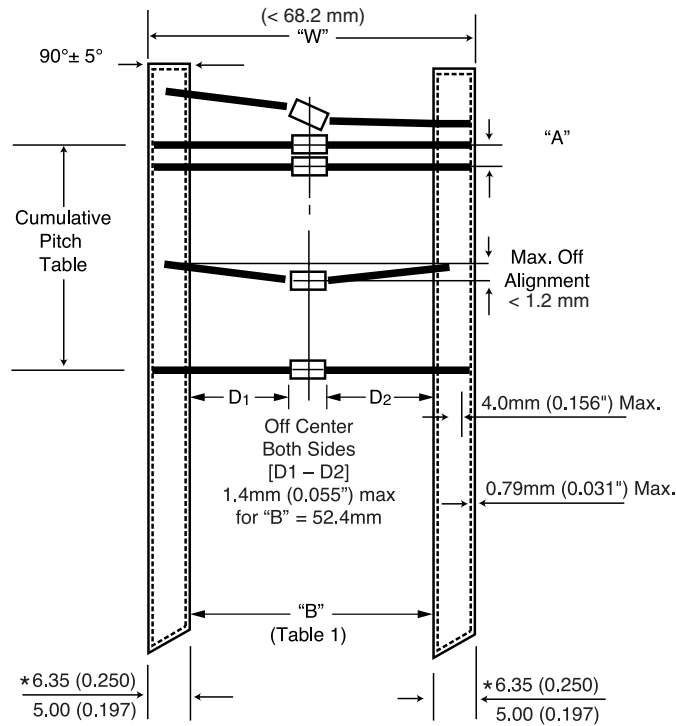


Figure 1.

Taping Specification DO204AP(G1), G3 and G4 Packages

Package	Component Spacing "A" (Lead to Lead)	Inside Tape Spacing "B"	Cumulative Pitch Tolerance
DO204AP(G1)	5.0 mm + 0.5 mm (0.197" ± 0.020")	52.4 mm + 1.5 mm / - 0.4 mm (2.062" + 0.059" / - 0.016")	Not to Exceed 1.5 mm (0.059") over 6 Consecutive Components
G3, G4	10 mm + 0.5 mm (0.394" ± 0.020")	52.4 mm + 1.5 mm / - 0.4 mm (2.062" + 0.059" / - 0.016")	



\*These are mounted values and have a  $\pm 0.40 \text{ mm}$  ( $0.0157''$ ) tolerance range at each value

16959

Figure 2.

10" Reel Specification (SOD57 and SOD64 Packages)

Description	Symbol	Reel Size 10"
Arbor Hole Diameter	$D_0$	$30 \pm 1$ mm
Reel Diameter	$D_2$	$250 \pm 2$ mm
Drive Hole Diameter	$D_3$	$10 \pm 1$ mm
Reel Width	$W_1$	$68 \pm 1$ mm
Drive / Arbor Hole Spacing	$W_2$	$27.5 \pm 1$ mm
Core Material		Plastic
Reel Material		Plastic

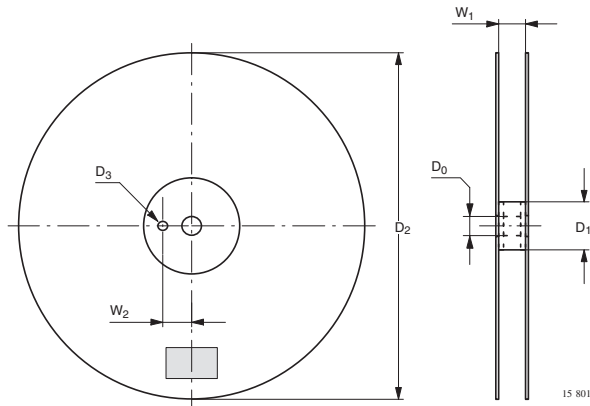


Figure 3.

13" Reel Specification (DO204AP(G1), G3 and G4 Packages)

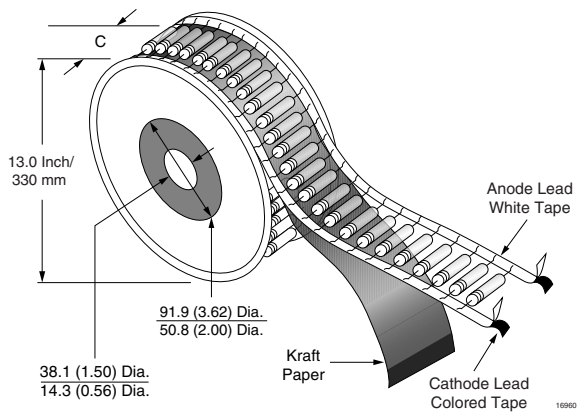


Figure 4.

**Ammopack #1 Specification (SOD57 and SOD64 Packages) (Figure 5.)**

Description	Symbol	Specification	
		Inches	Millimeters
Length	A	10.25 ± 0.2	260 ± 5.0
Width	B	2.75 ± 0.2	70 ± 5.0
Height	C	5.75 ± 0.65	146 ± 16.0

Material: corrugated board (neutral)

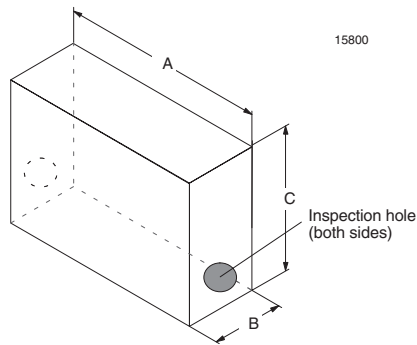
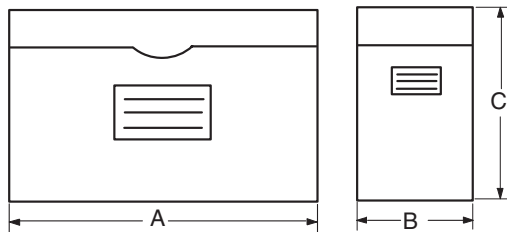


Figure 5.

**Ammopack #2 Specification (DO204AP(G1), G3 and G4 Packages) (Figure 6.)**

Dimension "A"	Dimension "B"	Dimension "C"
10.0" (255 mm)	3.15" (80 mm)	4.53" (115 mm)



16956

Figure 6.

**Preformed Leads (SOD64 Packages)**

Some types of automatic insertion machines have problems in bending the relatively thick leads of SOD64 Sinterglass Diodes. To overcome this, our diodes can be ordered with preformed leads as follows. Preformed Sinterglass Diodes are shipped in bulk.

**SUFFIX RA**

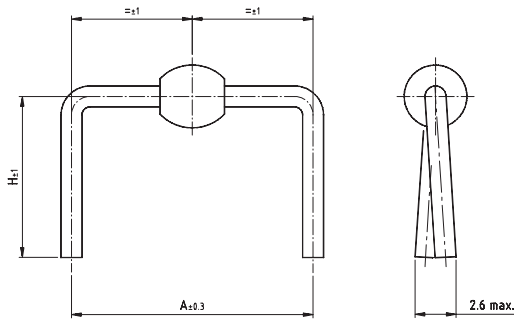


Figure 7.

**SUFFIX RAP**

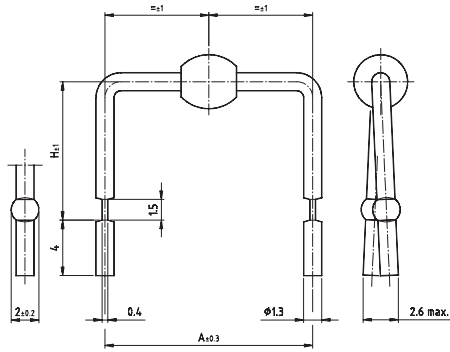


Figure 8.

**SUFFIX RAS**

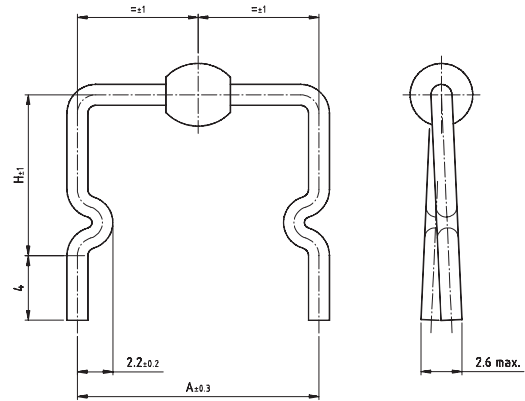


Figure 9.

**Common bending version:**

Suffix			A (mm)	H (mm)
RA 15/10	RAS 15/10	RAP 15/10	15	10
RA 17.5/ 10	RAS 17.5/ 10	RAP 17.5/ 10	17.5	10

Other bending versions are available on request.