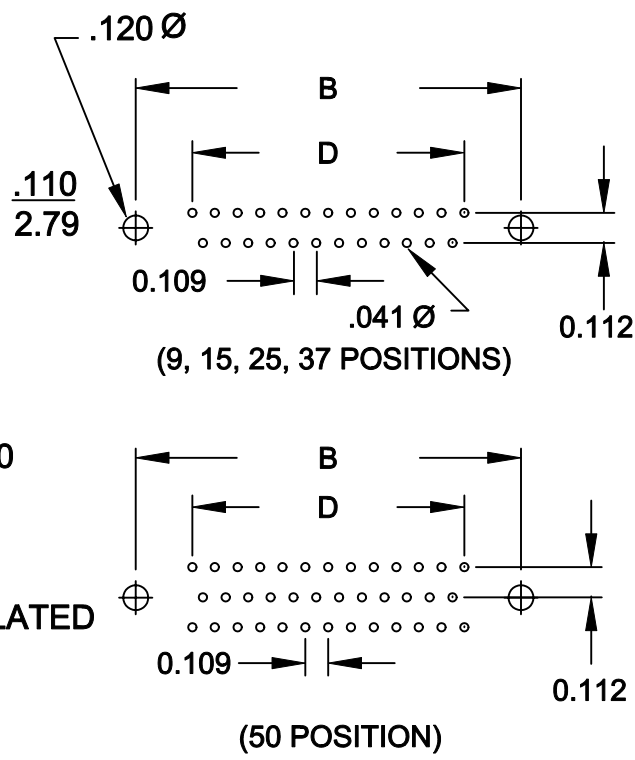
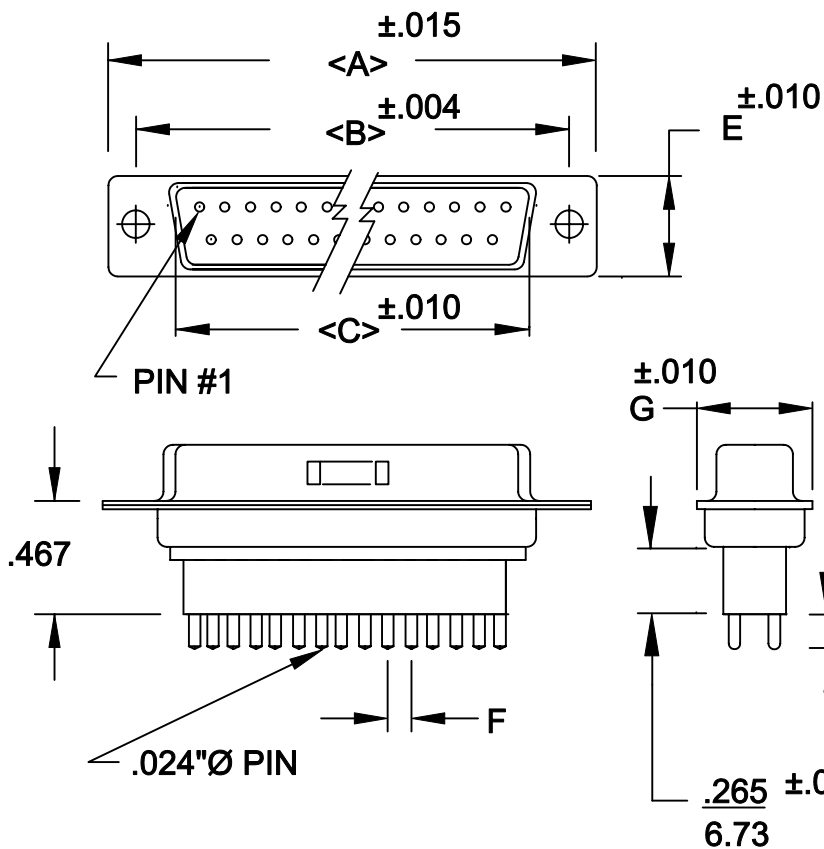


DESCRIPTION: HIGH PROFILE MALE CONNECTOR

POS.	A	B	C	D	E	F	G
09	1.213	0.984	0.666	0.436	0.329	0.109	0.496
	30.80	24.99	16.92	11.07	8.36	2.77	12.60
15	1.543	1.312	0.994	0.763	0.329	0.109	0.496
	39.19	33.32	25.25	19.38	8.36	2.77	12.60
25	2.087	1.852	1.534	1.308	0.329	0.109	0.496
	53.00	47.04	38.96	33.22	8.36	2.77	12.60
37	2.732	2.500	2.181	1.962	0.329	0.109	0.496
	69.30	63.50	55.42	49.83	8.36	2.77	12.60
50	2.638	2.406	2.079	1.744	0.445	0.109	0.606
	67.00	61.00	52.80	44.32	11.30	2.77	15.39



172-XXX-18XLXX1

SERIES _____

POSITIONS _____

009
015
025
037
050

GENDER _____

1 = MALE
2 = FEMALE

TERMINATION _____

8 = HIGH PROFILE VERTICAL

SHELL PLATING _____

1 = YELLOW CHROMATE
3 = NICKEL

HARDWARE OPTIONS _____

00 = NO HARDWARE
01 = .098 4-40 CLINCH NUT BOARD SIDE
02 = .250 4-40 CLINCH NUT BOARD SIDE
03 = .250 4-40 CLINCH NUT MATING SIDE

PLATING OPTIONS _____

01 = GOLD FLASH

SPECIFICATIONS:

MATERIALS:

SHELL: STEEL, NICKEL OR YELLOW CHROMATE PLATED

INSULATOR: UL 94V-0 RATED PBT- BLACK
230 ° PROCESS TEMP.

CONTACTS: BRASS - GOLD PLATED

RoHS COMPLIANT

ELECTRICALS:

CURRENT RATING: 5 AMPS

CONTACT RESISTANCE: 15 mOHMS MAX

INSULATOR RESISTANCE: 1000 MOHMS MIN

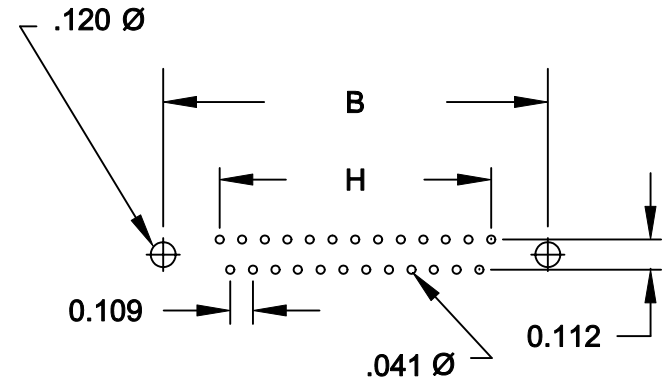
VOLTAGE: 500V AC FOR 1 MINUTE

TEMPERATURE: -50°C TO +100°C

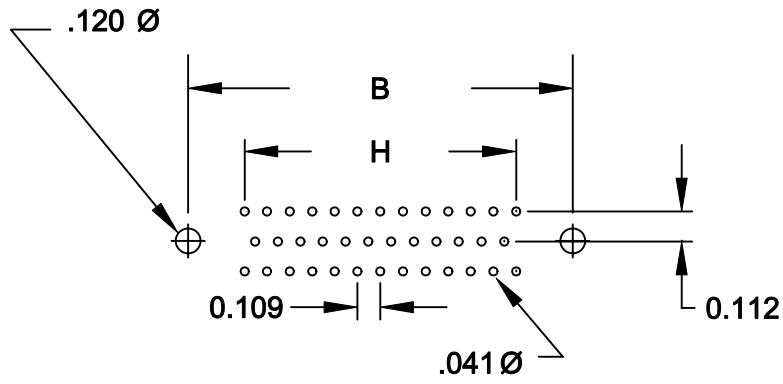
	THESE DRAWINGS AND SPECIFICATIONS ARE THE PROPERTY OF NorComp AND SHALL NOT BE REPRODUCED, COPIED OR USED AS THE BASIS FOR THE MANUFACTURE OF SALE OF APPARATUS WITHOUT WRITTEN PERMISSION.		DRAWN: WAYNE ROBBINS	DATE: 11-28-05
			CHECKED:	DATE:
NorComp		SCALE:	SHEET 1 OF 1	REV 2
		DWG. NO. 172-XXX-18XLXX1		

DESCRIPTION:


POS	B	H
9	$\frac{.984}{25.00}$	$\frac{.433}{10.99}$
15	$\frac{1.312}{33.32}$	$\frac{.757}{19.23}$
25	$\frac{1.852}{47.04}$	$\frac{1.305}{33.15}$
37	$\frac{2.500}{63.50}$	$\frac{1.957}{49.71}$
50	$\frac{2.406}{61.11}$	$\frac{1.740}{44.20}$



(9, 15, 25, 37 POSITIONS)

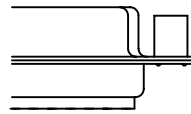


(50 POSITION)

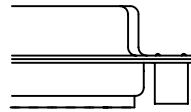
	THESE DRAWINGS AND SPECIFICATIONS ARE THE PROPERTY OF NorComp AND SHALL NOT BE REPRODUCED, COPIED OR USED AS THE BASIS FOR THE MANUFACTURE OF SALE OF APPARATUS WITHOUT WRITTEN PERMISSION.		DRAWN: PAM JENKINS	DATE: 11-28-05
			CHECKED:	DATE:
NorComp		SCALE:	SHEET 2 OF 2	REV 2
		DWG NO. DSUB VERTICAL FOOTPRINT		

DESCRIPTION: CLINCH NUT HARDWARE

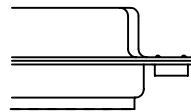
ALL CLINCH-NUTS ARE 4-40 INTERNAL THREADS



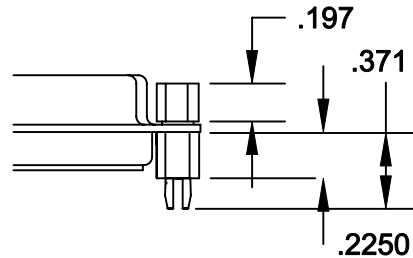
03X..... .250" (MATING SIDE) - CN8



02X250" (BOARD SIDE) - CN2




01X098" (BOARD SIDE) - CN1



91X225" (BOARD SIDE) - .197 MATING SIDE - CN10/SFS0440

NOTE: 4-40 FEMALE SCREW LOCK IS REMOVABLE

	THESE DRAWINGS AND SPECIFICATIONS ARE THE PROPERTY OF NorComp AND SHALL NOT BE REPRODUCED, COPIED OR USED AS THE BASIS FOR THE MANUFACTURE OF SALE OF APPARATUS WITHOUT WRITTEN PERMISSION.		DRAWN: WAYNE ROBBINS	DATE: 11-22-05
	<h1>NorComp</h1>		CHECKED:	DATE:
SCALE:			SHEET 1 OF 1	REV 1
DWG NO.			CLINCH-NUT OPTIONS	