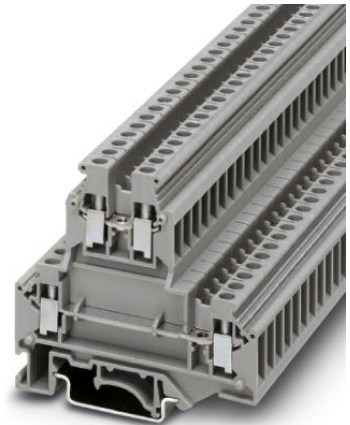


UKKB 5

Order No.: 2771146



<http://eshop.phoenixcontact.de/phoenix/treeViewClick.do?UID=2771146>

Double-level terminal block with a screw connection, cross section: 0.2 mm² - 4 mm², AWG: 24 - 12, width: 6.2 mm, color: Gray

Commercial data	
EAN	4017918068226
Pack	50 Pcs.
Customs tariff	85369010
Weight/Piece	0.01655 KG
Catalog page information	Page 291 (CL-2007)

Product notes

WEEE/RoHS-compliant since:
01/01/2003



<http://www.download.phoenixcontact.com>
Please note that the data given here has been taken from the online catalog. For comprehensive information and data, please refer to the user documentation. The General Terms and Conditions of Use apply to Internet downloads.

Certificates / Approvals

Approval logo



CSA

Nominal voltage U_N	600 V
Nominal current I_N	25 A
AWG/kcmil	28-10

CUL

Nominal voltage U_N	600 V
Nominal current I_N	30 A
AWG/kcmil	26-10

UL

Nominal voltage U_N	600 V
Nominal current I_N	30 A
AWG/kcmil	26-10
Certification	BV, CCA, CSA, CUL, DNV, GL, GOST, KEMA, LR, NK, PRS, RS, UL

Accessories

Item	Designation	Description
Assembly		
2771065	ATP-UKKB 3	Separating plate, width: 2.5 mm, color: gray
3022218	CLIPFIX 35	Snap-on end bracket, for 35 mm NS 35/7.5 or NS 35/15 mounting rail, can be fitted with Zack strip ZB 8 and ZB 8/27, terminal strip marker KLM 2 and KLM, width: 9.5 mm, color: gray
2771023	D-UKKB 3/5	Cover, width: 2.5 mm, color: gray
2770859	DG-UKKB 3/ 5	Cover, width: 2.5 mm, color: gray
2770804	DP-UKKB 3/ 5	Spacer plate, compensates for level offset if standard terminal blocks are to be fitted adjacently, 2.5 mm thick
1201413	E/UK 1	End brackets, for supporting the ends of double-level and three-level terminal blocks, width: 10 mm, color: gray
0201595	FB-150 METER	Cross connection rail, for fixed bridging of identical inputs and outputs, made of Cu, nickel-plated, 1 m long
1201028	NS 32 AL UNPERF 2000MM	G rail 32 mm (NS 32)
1201280	NS 32 CU/120QMM UNPERF 2000MM	G-profile DIN rail, deep-drawn, material: Copper, unperforated, height 15 mm, width 32 mm, length 2 m
1201358	NS 32 CU/35QMM UNPERF 2000MM	G-profile DIN rail, material: Copper, unperforated, height 15 mm, width 32 mm, length 2 m
1201002	NS 32 PERF 2000MM	G-profile DIN rail, material: Steel, perforated, height 15 mm, width 32 mm, length 2 m

1201015	NS 32 UNPERF 2000MM	G-profile DIN rail, material: Steel, unperforated, height 15 mm, width 32 mm, length 2 m
0801762	NS 35/ 7,5 CU UNPERF 2000MM	DIN rail, material: Copper, unperforated, height 7.5 mm, width 35 mm, length: 2 m
0801733	NS 35/ 7,5 PERF 2000MM	DIN rail, material: Steel, perforated, height 7.5 mm, width 35 mm, length: 2 m
0801681	NS 35/ 7,5 UNPERF 2000MM	DIN rail, material: Steel, unperforated, height 7.5 mm, width 35 mm, length: 2 m
1201756	NS 35/15 AL UNPERF 2000MM	DIN rail, deep-drawn, high profile, unperforated, 1.5 mm thick, material: Aluminum, height 15 mm, width 35 mm, length 2 m
1201895	NS 35/15 CU UNPERF 2000MM	DIN rail, material: Copper, unperforated, 1.5 mm thick, height 15 mm, width 35 mm, length: 2 m
1201730	NS 35/15 PERF 2000MM	DIN rail, material: Steel, perforated, height 15 mm, width 35 mm, length: 2 m
1201714	NS 35/15 UNPERF 2000MM	DIN rail, material: Steel, unperforated, height 15 mm, width 35 mm, length: 2 m
1201798	NS 35/15-2,3 UNPERF 2000MM	DIN rail, material: Steel, unperforated, 2.3 mm thick, height 15 mm, width 35 mm, length: 2 m
2770215	TS-KK 3	Separating plate, for electrical separation of neighboring bridges, can be fitted later, no loss of pitch, color: Gray

Bridges

0201155	EB 2- 6	Insertion bridge, 2-pos., fully insulated
0201142	EB 3- 6	Insertion bridge, 3-pos., fully insulated
0201139	EB 10- 6	Insertion bridge, 10-pos., divisible, fully insulated
0203250	FBI 10- 6	Fixed bridge, 10-pos., screw heads with insulating collar, divisible, with screws
0201650	FBI 100- 6	Fixed bridge, 100-pos.
0201867	FBI 20- 6	Fixed bridge, 20-pos.
1302338	IS-K 4	Bridge bar isolator, as distance piece
0301505	ISSBI 10- 6	Isolator bridge bar, 10-position, divisible, with screws, for switchable branches
0202280	LB 10-6 BU	L-bridge, 10-position, screw with blue insulation material
0202358	LB 10-6 GY	L-bridge, 10-position, screw with gray insulation material
0202293	LB 10-6 RD	L-bridge, 10-position, screw with red insulation material
0202303	LB 100-6 BU	L-bridge, 100-position, screw with blue insulation material
0202345	LB 100-6 GY	L-bridge, 100-position, screw with gray insulation material
0202316	LB 100-6 RD	L-bridge, 100-position, screw with red insulation material
1413230	SBRN 2-7	Switching bridge, 2-pos.
2303239	USBR 2-7	Switching bridge, 2-pos.
2305538	USBRJ 2-7	Switching bridge, for bridged terminal groups, 2-pos.

Marking

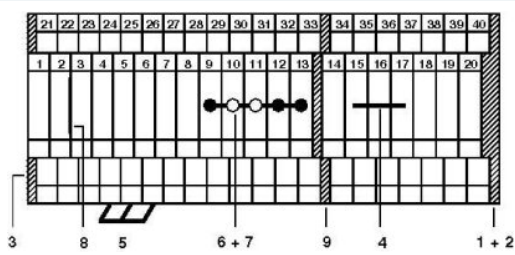
1007222	SBS 6:UNBEDRUCKT	Marker cards for modular terminal blocks, color: white
1050499	ZB 6:SO/CMS	Zack strip, 10-section, divisible, special printing, marking according to customer requirements

Plug/Adapter

0309523	KSS 3- 6	Short circuit connector, for short circuiting neighboring terminal blocks, can only be used with PSB or PSBJ, 3-pos., pitch: 6.2 mm, color: Black
0301547	KSS 6	Short circuit connector, for short circuiting neighboring terminal blocks, can only be used with PSB or PSBJ, 2-pos., pitch: 6.2 mm, color: Black
3000625	PS-UKK 5	Modular double-level test plug, contacts in the upper and lower level simultaneously, 6 mm wide, available as: 10-pos. blocks with two connection pins
3000641	PS-UKK/E	Individual double-level test plug, contacts in the upper and lower level simultaneously, 5 mm wide, 1-pos.
0601292	PSB 3/10/4	Test plug socket, not insulated, length: 10 mm, screw thread width: 3 mm, socket width: 4 mm
0201304	PSBJ 3/13/4	Test plug socket, insulated, length: 13 mm, screw thread width: 3 mm, socket width: 4 mm, insulation material transparent
0201647	RPS	Reducing plug, for transition from 4 mm diameter test plug socket, insulation: gray

Drawings

Circuit diagram



- 1 = cover
- 2 = spacer cover
- 3 = spacer plate
- 4 = fixed bridge
- 5 = insertion bridge
- 6 = isolator bridge bar
- 7 = bridge bar isolator
- 8 = separating plate
- 9 = partition plate

Address

PHOENIX CONTACT Inc., USA
586 Fulling Mill Road
Middletown, PA 17057, USA
Phone (800) 888-7388
Fax (717) 944-1625
<http://www.phoenixcon.com>



© 2008 Phoenix Contact
Technical modifications reserved;